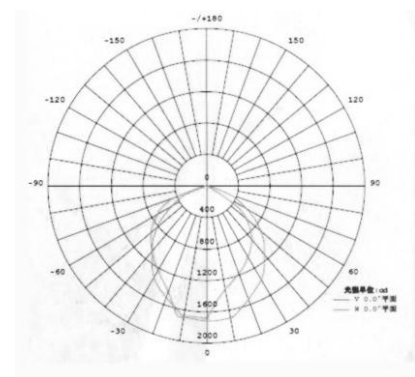
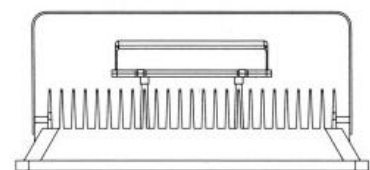
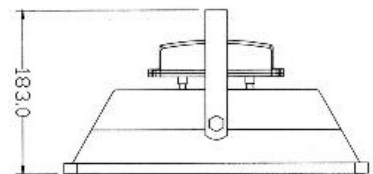
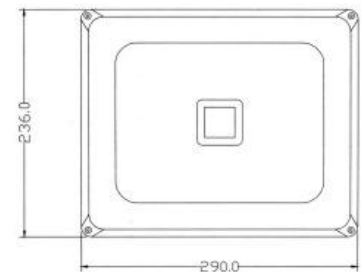
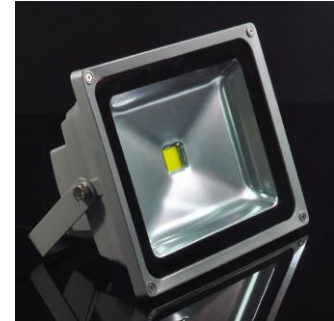


This 50W flood lamp is designed with a powerful LED in a die cast aluminum radiator for excellent heat dissipation, the anodized reflector delivers even and efficient lighting effect. The flood lamps are suitable for illumination of landscapes and pathways.

Technical Specification

FLBQ290-50W		
Input voltage	AC 85—265V 50/60Hz	
Power factor	>0.98	
LED number	1	
LED working voltage	30-36V DC	
Total power of LED	50W	
Total power of light	56W	
Lumen efficiency	100 Lm/W	
Lumen output	Warm white	4,350 Lm
	Neutral white	4,760 Lm
	Cool white	4,630 Lm
Average luminance	Height 6M is 75 Lux	
	Height 8M is 54 Lux	
	Height 10M is 25 Lux	
Light footprint	Height 6M is 23 x 12M rectangle	
	Height 8M is 31 x 17M rectangle	
	Height 10M is 36 x 19M rectangle	
Illumination uniformity	>0.6	
CPI	Warm white	Ra>78
	Neutral / Cool white	Ra>85
Color Temp.	Warm white	2700-3900K
	Neutral white	3900-6000K
	Cool white	6000-7000K
Light design	Lens secondary light distribution	
Light distribution	Symmetrical / Rectangle	
Junction Temp.	≤70°C	
Operating Temp.	-40°C to +55°C	
Storage Temp.	-25°C to +65°C	
Certificate / IP	CE RoHS / IP65	
NW / GW	4.2 / 4.5 Kgs	
Packing dimension	655 x 350 x 280mm	



*Detailed specification is available upon request.