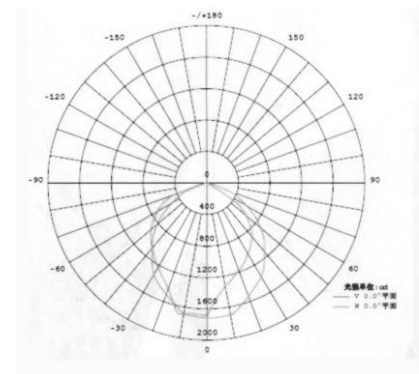
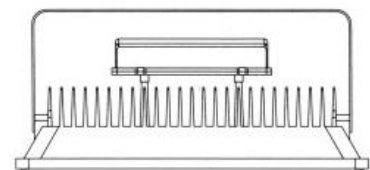
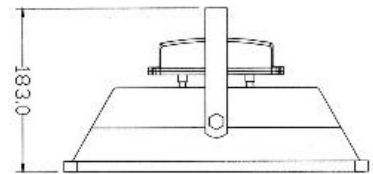
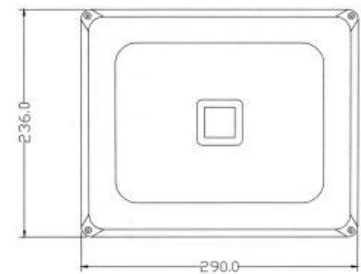
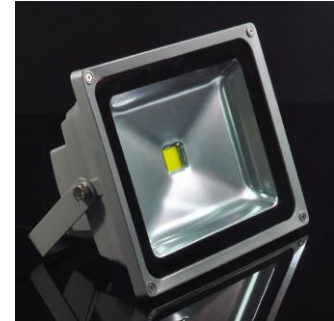


This 30W flood lamp is designed with a powerful LED in a die cast aluminum radiator for excellent heat dissipation, the anodized reflector delivers even and efficient lighting effect. The flood lamps are suitable for illumination of landscapes and pathways.

Technical Specification

FLBQ225-30W		
Input voltage	AC 85—265V 50/60Hz	
Power factor	>0.98	
LED number	1	
LED working voltage	30-36V DC	
Total power of LED	30W	
Total power of light	35W	
Lumen efficiency	100 Lm/W	
Lumen output	Warm white	2,550 Lm
	Neutral white	2,860 Lm
	Cool white	2,730 Lm
Average luminance	Height 6M is 55 Lux	
	Height 8M is 40 Lux	
	Height 10M is 27 Lux	
Light footprint	Height 6M is 18 x 10M rectangle	
	Height 8M is 24 x 13M rectangle	
	Height 10M is 32 x 17M rectangle	
Illumination uniformity	>0.7	
CPI	Warm white	Ra>78
	Neutral / Cool white	Ra>85
Color Temp.	Warm white	2700-3900K
	Neutral white	3900-6000K
	Cool white	6000-7000K
Light design	Reflector secondary light distribution	
Light distribution	Symmetrical / Rectangle	
Junction Temp.	≤70°C	
Operating Temp.	-40°C to +55°C	
Storage Temp.	-25°C to +65°C	
Certificate / IP	CE RoHS / IP65	
NW / GW	4.2 / 4.5 Kgs	
Packing dimension	650 x 350 x 280mm	



*Detailed specification is available upon request.